

System Controller Dual Pressure/Vacuum Source

Model PCNC-0071-00



Features :

System Controller for Seyonic Air Driven Pipetting Systems

Operates for single channel pipetting modules (PCNC-0061-00), 8-Channel unit (PCNC-0090-00) and 24-Channel head (PCNC-0089-00)

Dual Pressure/Vacuum Source for fast switching time between aspirate and dispense pressure

Single point interface with the application host computer.

Product Summary:

The System Controller allows seamless integration of the Seyonic Air driven Pipettors with the customer automated platform.

It acts as utility module serving the pipetting systems and provides the interface between the pipetting system and the automated platform's host computer. It operates by supplying the necessary vacuum and pressure for pipetting actions while acting as a central connection point for commanding the pipettor channels.

The system interface consists of a panel providing communication to the host PC via a TCP/IP port, a connector for hardware I/O signals for realtime coordination of the pipetting actions with the robotic system and the connection to the pipettors. Outlets for positive and negative pressure allow chaining tubing to bring the working pressure to the pipettors.

System Controller Dual Pressure/Vacuum Source

Model PCNC-0071-00

Specifications :

Pressure range

-600 to +600 mbar gauge

Communication

TCP/IP Protocol

Ethernet RJ45 connector

Precision on pressure

< 1 % FS

Operating temperature

10 to 40 °C

Power requirements

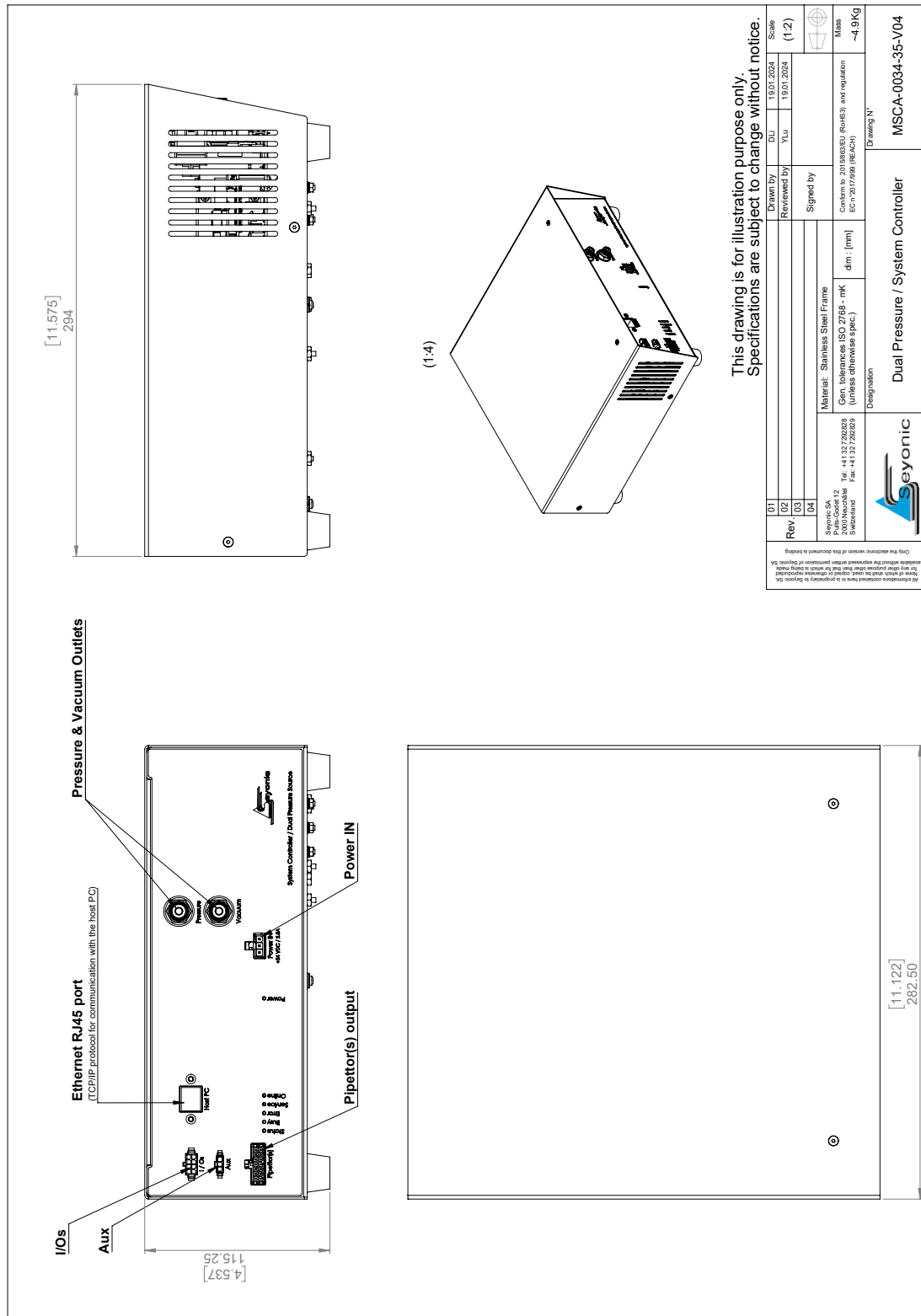
max. DC 24 V / 60W

Weight

5.0 kg

System Controller Dual Pressure/Vacuum Source

Model PCNC-0071-00



This drawing is for illustration purpose only. Specifications are subject to change without notice.

01	Drawn by	DLU	19.07.2024	Scale	(1:2)
02	Reviewed by	YLU	19.07.2024	Mass	~4,9Kg
03	Signed by			Conform to: ISO 2768 - mK EC n° 2017/096 (REACH)	
04				Drawing 'N'	

Material: Stainless Steel Frame

Conform to: ISO 2768 - mK

dim : [mm]

Mass: ~4,9Kg

Designation: Dual Pressure / System Controller

MSCA-0034-35-V04

Mechanical Drawing

Customized integration and solutions on request.

System Controller Dual Pressure/Vacuum Source

Model PCNC-0071-00